

BOILER WALL CUTTING SYSTEMS

Made in Germany

- Increased safety of workers
- No heat affected zone
- Less wearing of cutting disks
- High productivity
- High cutting quality

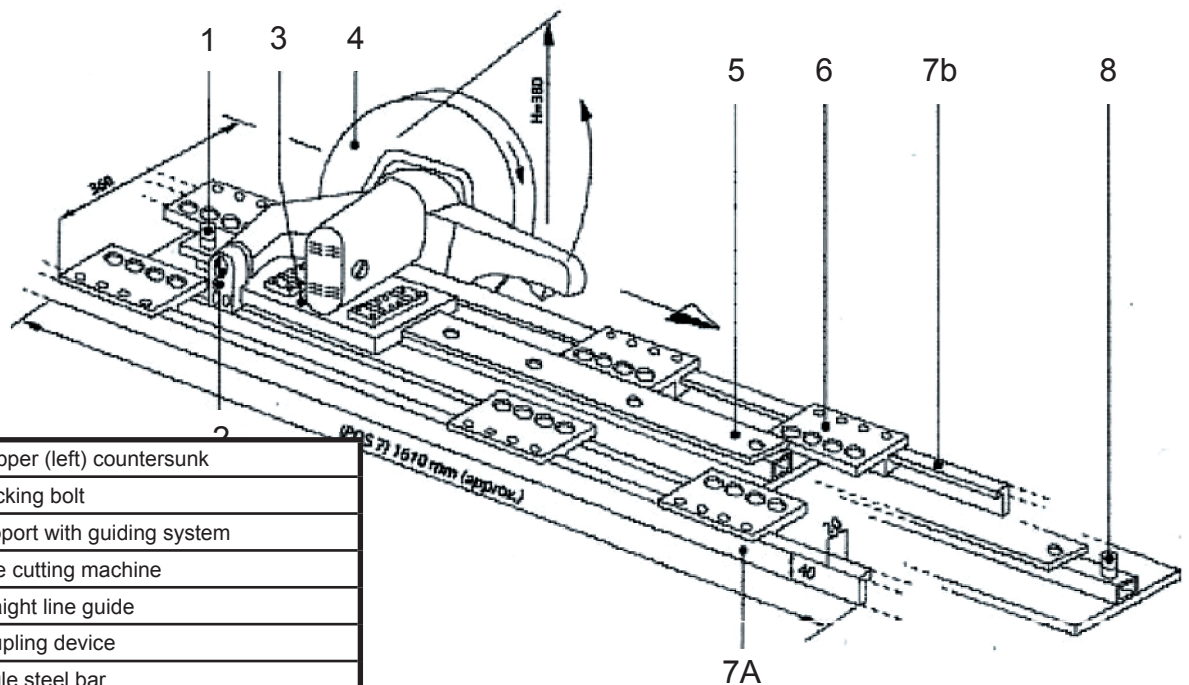


Typ BWC

Field of application

The machine serves to cut boiler walls. Having a low weight the unit is of very rugged design. Operated by one man only, it is well suited for use in the workshop and on site. Due to its extremely compact type of construction it can be readily used in confined space. Its high working speed and quick readiness allows economical manufacturing.

TECHNICAL DATA



1	Stopper (left) countersunk
2	Blocking bolt
3	Support with guiding system
4	Pipe cutting machine
5	Straight line guide
6	Coupling device
7A	Angle steel bar
7B	Angle steel bar
8	Stopper (right)

Technical data complete system:

Max. membrane length:	4,5 m
Max. tube diameter:	63,5 mm
Rail material:	aluminium
Weigth:	on request

Technical data pneumatic feed:

Power:	3500 Watt
Compressed air:	6,2 bar(g)
Air consumption:	60 l/s
Connection:	R 1/2 inch
Noise level:	85 d(B)A

